

OPUS-2700 Series

Pay-on-Entry Terminal



The OPUS-2700 Series Pay-on-Entry Terminal is a dual-function device that communicates with Pro+, and can be a ticket dispenser or a pay-on-entry device. It is designed to be installed in the entry lane of a parking facility. In ticket-dispensing mode, the device will dispense tickets and provide credit-card-in capability when used online in conjunction with the OPUS-4700 Credit Card Exit Terminal or OPUS-7700 Pay-in-Lane Exit Station. In pay-on-entry mode, the device will display a flat fee, accept credit card payment, and encode a future time on the ticket up to 41 days. The configurable operation provides flexibility to collect parking fees up front from special event and longer-stay patrons departing on bus tours, cruises, ferries, etc., or to change your mode of operation between day and night. Prepaid tickets are valid through the paid-thru date and time and, upon the patron's return, any overstay fees are calculated and collected prior to exiting the parking facility.

Features

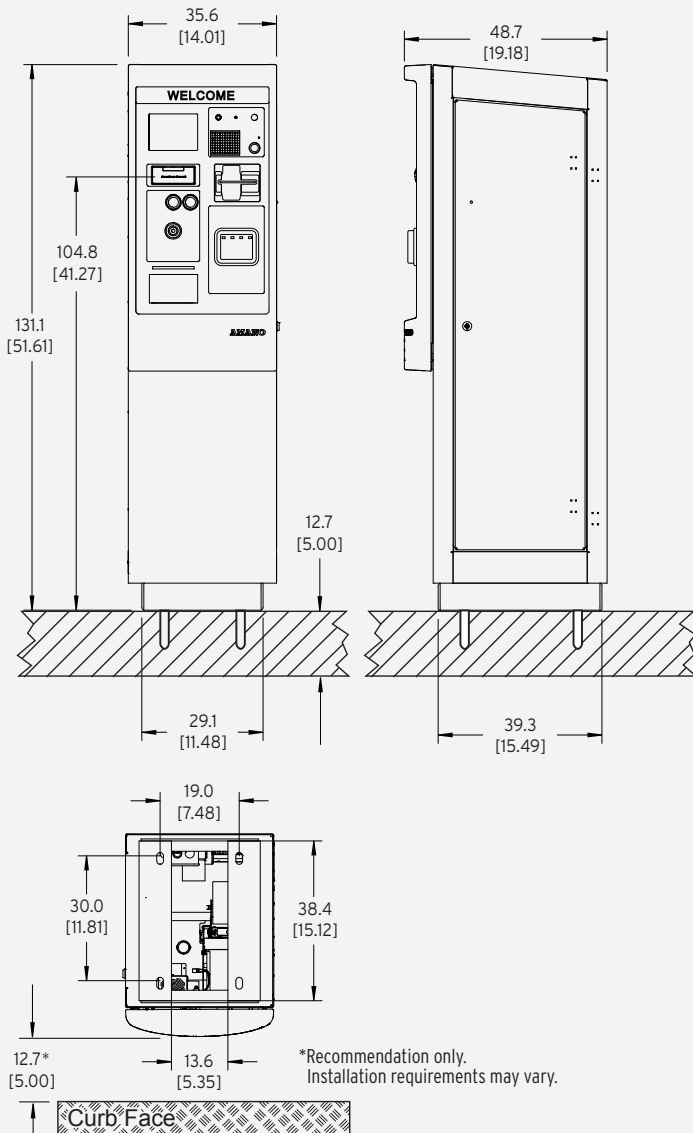
- Models include standard magstripe (MSR) or PCI P2PE EMV-ready MSR/chip terminal versions
- 5.7" color display - sunlight readable
- Voice Announcement and intercom
- TCP/IP network connectivity
- Ticket dispensing mechanism
- Receipt printer
- Compatible with Genetec LPR system to print and encode patron's LPN on the dispensed ticket



OPUS Series®

OPUS-2700 Series

Pay-on-Entry Terminal



SPECIFICATIONS

COMPLIANCE

RoHS Compliant

The OPUS-2700 does not store credit card data

Meets ADA (Americans with Disabilities Act) and ANSI (American National Standards Institute) requirements

ELECTRICAL

Power Source: 120 VAC, 60 Hz

Utilization: 10 amp maximum (120V)

TIME CONTROL

Real-time clock synchronization with host computer

ENVIRONMENT

Temperature: -20°F ~ 120°F (-29°C ~ 49°C)
Automatic thermostat-controlled heater included

Humidity: 10% ~ 90% (non-condensing)

HOUSING

Heavy-duty, 14-gauge steel construction, weather gasketing, lockable door

Height: 51.6" (131.1 cm)

Width: 14.0" (35.6 cm)

Depth: 19.18" (48.7 cm)

Weight: 140 lbs. (63.5 kg)

Ticket throat: 41.27" (104.8 cm)

Finish (Standard): Textured powder coat finish OPUS (RAL#7022); custom color available

TICKET READER/ENCODING MECHANISM

Easy ticket jam removal

Encodes encrypted 2D data matrix barcode data and transaction data in man-readable text

Vaults backaway tickets

RECEIPT PRINTER

High speed thermal line dot

8" thermal paper roll

Auto-retract

TICKETS

Uses fanfold thermal tickets: Holds one carton of 5,000 tickets

Credit card size tickets: 2-1/8" x 3-3/8" (5.40 cm x 8.65 cm)

INTERCOM/VOICE ANNOUNCEMENT

Aiphone LEF series intercom

Standard Voice Announcement

OPTIONAL KITS

Integrated IP Camera

Integrated FlexScan QR400 Barcode Scanner

Integrated Proximity Reader

Third-party Intercom Mounting

Shown with optional EMV Terminal. Specifications are approximate and are subject to change without notice.

